

January

N E W S L E T T E R

A note from administration...



We started our 3rd quarter of school (Q3) on Tuesday, January 5, 2021. Students should be attending their 2nd, 4th, 6th and period classes this quarter. This is what the schedule looks like every Monday, Tuesday, Thursday, and Friday throughout Q3 (until mid-March):

2nd period	9:00 - 9:50 AM
4th period	10:00 - 10:50 AM
6th period	12:00 - 12:50 PM
8th period (Advisory)	1:00 - 1:50 PM

Please remember that advisory is mandatory, as it is still part of the regular school day! Although grades are not assigned during advisory classes, attendance is taken and reported to the state! Parents, you can check student attendance in all of their classes through Tyler SIS. After logging in and clicking the attendance box in your students Portal, please be sure to CHECK the “Show all codes” option at the very bottom of the screen. This will show all absences and tardies for each class.

Please do not hesitate to reach out to your child’s teachers or the administrative team if you have any questions or concerns throughout the semester. You can find our contact information on our school website (datacharter.org) or by clicking [here](#).

Important Dates

January 4: Professional development for teachers (no school)

January 5: Welcome back! 1st day back for students

January 8: Student Portrait due (if you missed this deadline, you can still email your yearbook photo to gena.lawson@datacharter.org)

January 18: Martin Luther King Jr. Day (no school)

Week of January 25: Seniors will take NWEA assessment (more info to come)

Semester 1 Final Grades

Student semester 1 (S1) grades will be finalized and posted this month.

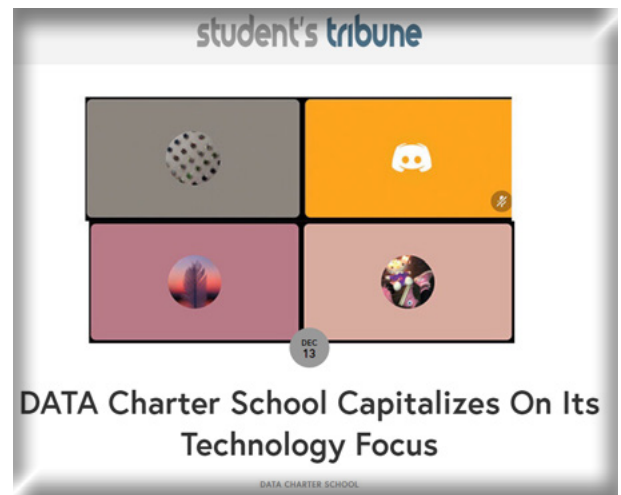
Parents should expect to receive report cards via email.

You can also view final S1 grades via Tyler. Here are the directions to view them in Tyler:

Log in to Tyler, then click Grades (under Current Academics). Recall that the grades under the “T1” and “T2” columns represent the grades for Q1 and Q2 respectively.

The Student's Tribune features DATA!

The Student’s Tribune is a multimedia platform dedicated to highlighting the success stories of students, in an out of classrooms, and the schools they attend. Check out what they had to say about DATA and how we are utilizing our tech expertise this year by [clicking here!](#)



COVID-19 Vaccine Info

The New Mexico Department of Health (NMDOH) is currently in Phase 1B of vaccination process, which means that all individuals 75 years of age and older, individuals 16 or older with underlying medical conditions that place them at higher risk from COVID-19, frontline essential workers who cannot work remotely, and vulnerable populations are eligible to receive a COVID-19 vaccine.

[Click here](#) to register for your COVID-19 vaccination today!

[Click here](#) for more information about New Mexico's current phase of vaccinations or for answers to frequently asked questions.

Here are some additional helpful resources:

- [APS School Based Health Centers](#)
- [CDC - FLU - Talking to Children About Flu](#)
- [Washing Your Hands video](#)
- [Lavarse las Manos video](#)
- [Wearing Cloth Face Coverings video](#)
- [Usar una Cuierta de Tela para la Cara video](#)

Inspiring Girls Expeditions

WHAT: Inspiring Girls Expeditions is a tuition-FREE 12-day wilderness science education program for high school girls

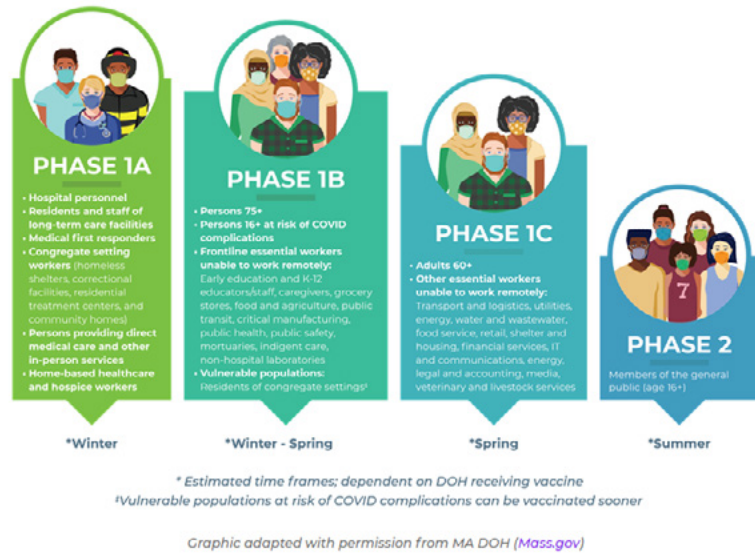
WHO: 16 and 17 year old girls*

WHERE: Mountaineering in Alaska and Washington; Kayaking and Packrafting in Alaska; Rock Climbing in Colorado

WHEN: All expeditions run between June and August 2021

[Click here](#) to read through Frequently Asked Questions (FAQ) and/or to apply! Start your application as soon as January 21, 2021 at www.inspiringgirls.org.

*They welcome cis girls, trans girls, and any girl-identifying youth, as well as non-binary and gender conforming youth.



Petition to Support Charter Schools

New Mexico Public Charter Schools have created a petition to show support for charter schools in New Mexico and the legislative platform of Public Charter Schools of New Mexico (PCSNM).

If you are interested in showing your support, please sign [the petition](#) and share the link with family and friends!



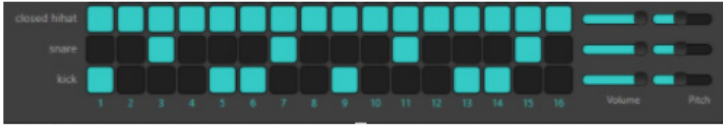
Women in high school and college who have an interest in science, medicine and/or engineering are now invited to register for a session of the Perry Virtual Experience. The Perry Virtual Experience is a free, 2.5-hour, interactive online experience for high school and college-aged women who are interested in pursuing careers in orthopaedic surgery and engineering. Participants will hear from women leaders in these fields and dive into online orthopaedic simulations and biomechanics experiments. Additional information can be found on our website: <https://perryinitiative.org/pve/>



Student Showcase

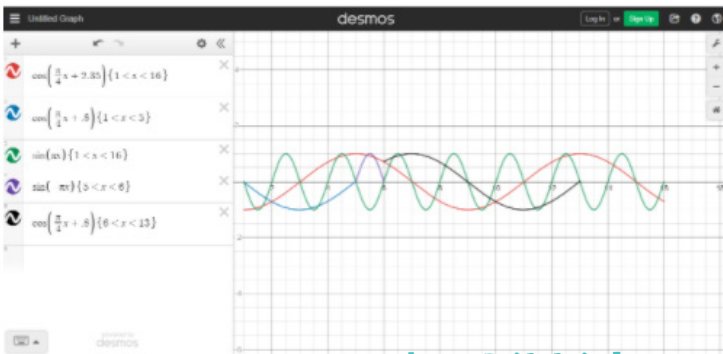
"When am I ever going to see this in my every day life?" is a common question heard in math classes such as Trigonometry and Pre-Calculus. Fortunately, Mr. Rose has students working on creative ways to answer this question! Check out how his freshmen are using trigonometry to model a drum beat from songs they listen to every day:

Now you will try to model the drumbeat you created from part A.



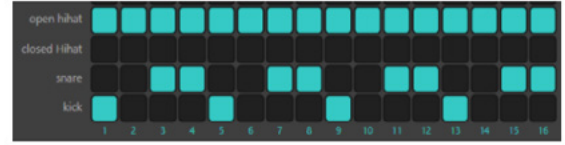
MY EXAMPLE (DELETE THIS AND PUT YOUR WORK HERE)

Here is my work:



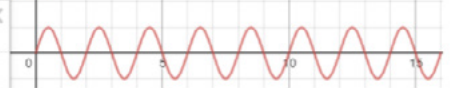
by Rikki Lane

Now you will try to model the drumbeat you created from part A. (If you don't have a drumbeat in Part A, you can model the snare drum from my example)



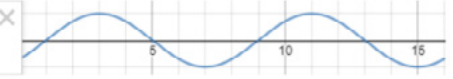
Open Hi-Hat:
1,2,3,4,5,6,7,8,9,10,11,12,13,14,15,16

$$\sin(\pi x) \{0 < x < 16\}$$



Kick:
1,5,9,13

$$\sin\left(\frac{\pi}{4}x - .785399\right) \{0 < x < 16\}$$



Snare:
3,4,7,8,11,12,15,16

$$\sin\left(\frac{\pi}{4}x\right) \{0 < x < 16\}$$



$$\sin\left(\frac{\pi}{4}x + .7854\right) \{0 < x < 16\}$$

by Ben Liebert

Mrs. Wilson also encouraged her 8th grade students to be creative with their math skills by having them design images by plotting points on a coordinate plane. Check out some of their work here:

